









WIDE BAY ELECTORATE

A FOREST INDUSTRIES PROFILE



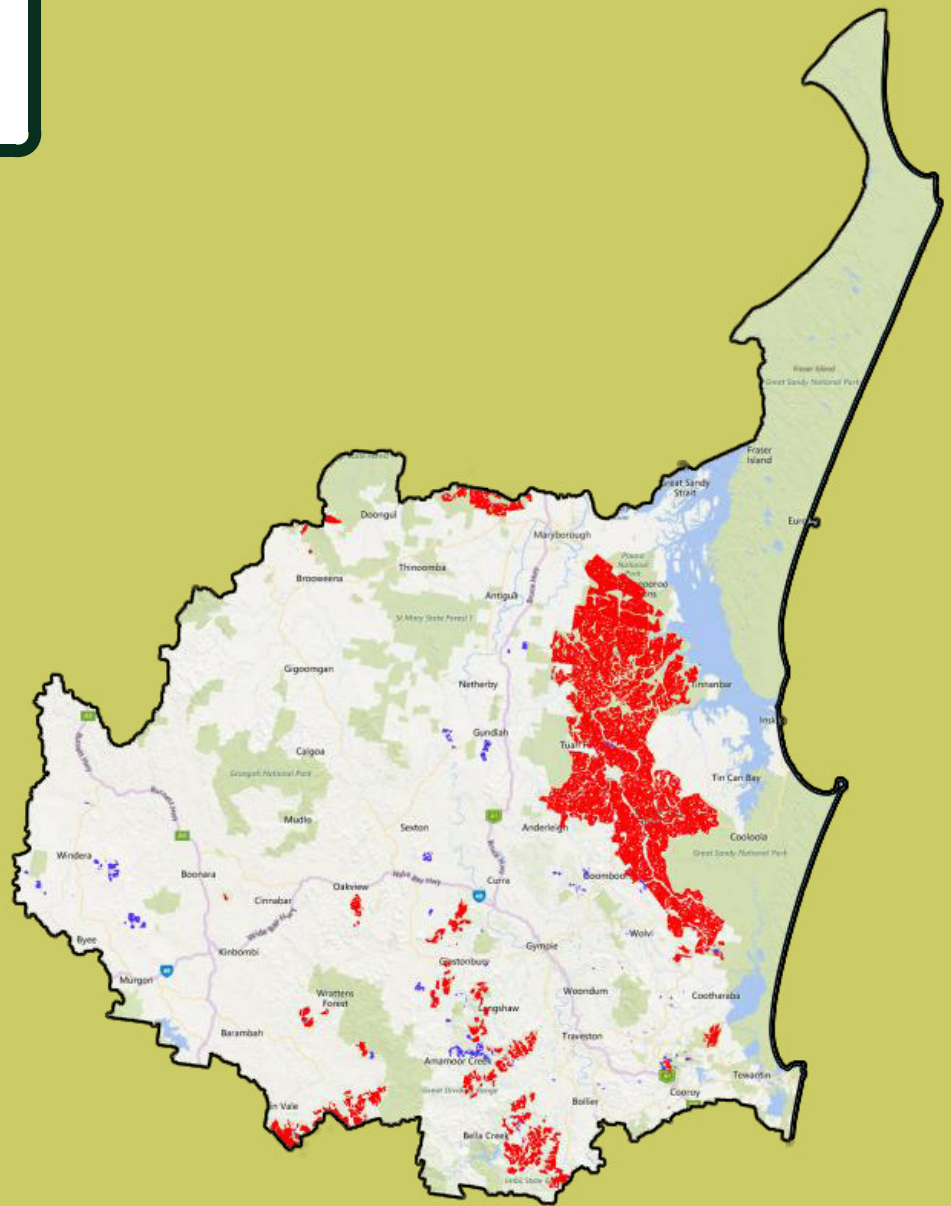
Forest Product Industries	Direct employment	Indirect employment
Wide Bay	 1723	 2369
Queensland	 12,422	 17,080
Australia	 76,400	 105,050

LEGEND

Softwood Plantations



Hardwood Plantations



Products/industries in the area:

- Hardwood and softwood plantations
- Particleboard and fibreboard plants
- Sawmills
- Forest contractors

Big employers:

- HQP
 - Superior Wood
 - Laminex
 - Borg
 - Hyne
 - Baywood Products
- And many more smaller operators

AFPA is the peak national industry body representing the resources, processing, and pulp and paper industries covering the forest products value chain.

AFPA represents all elements of the value chain from the sustainable harvesting of plantations and multiple use natural forest resource including forest establishment and management, harvesting and haulage, processing of timber resources and manufacture of pulp and paper.



TREES | WOOD | PAPER