









# NEW ENGLAND ELECTORATE

## A FOREST INDUSTRIES PROFILE



Forest Product Industries	Direct employment	Indirect employment
New England	 298	 410
New South Wales	 24,089	 33,122
Australia	 76,400	 105,050

## LEGEND

Softwood Plantations



Hardwood Plantations

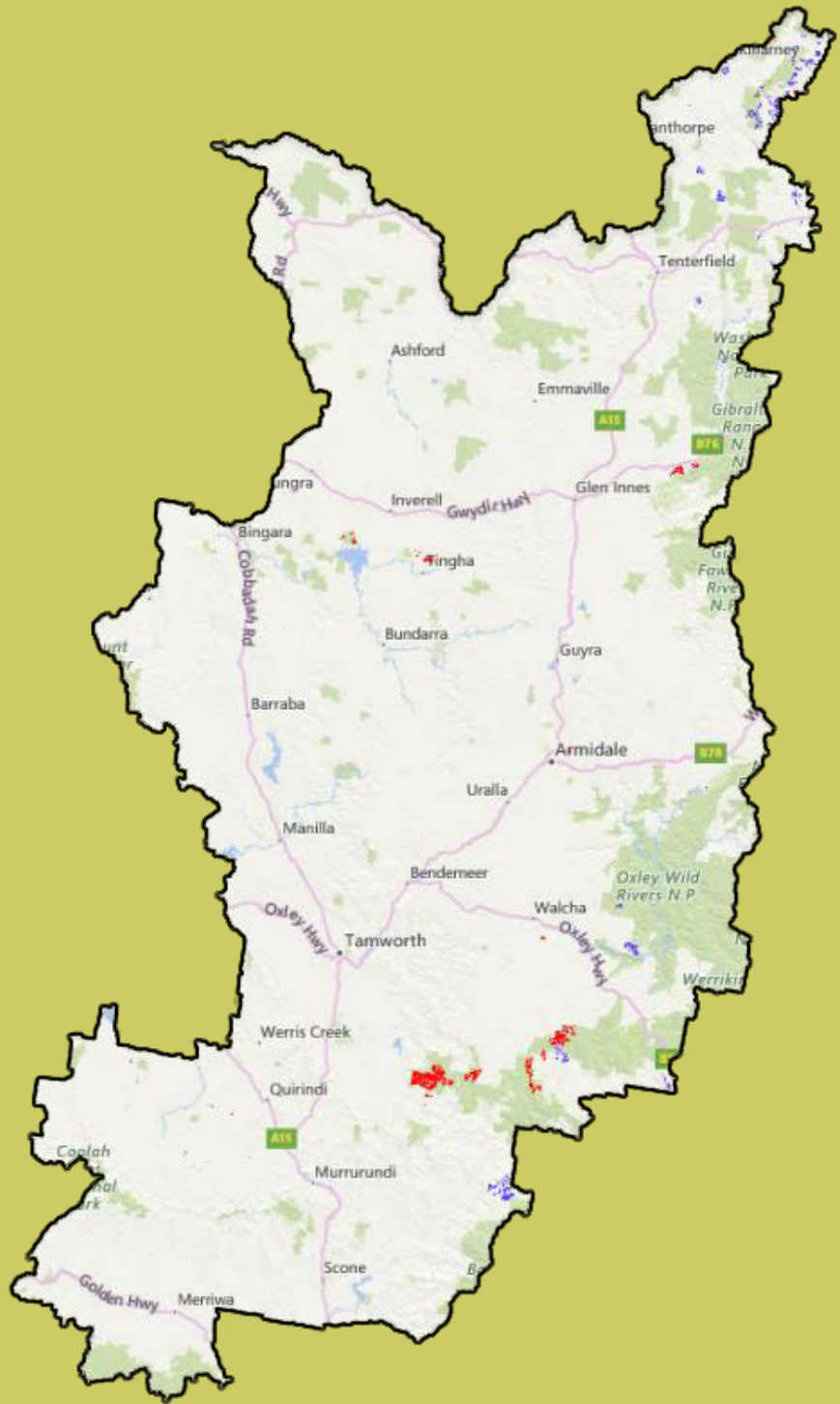


### Products/industries in the area:

- Sawmills
- Softwood and hardwood plantations
- Forest contractors

### Big employers:

- Forestry Corporation of New South Wales
- And many more smaller operators



TREES | WOOD | PAPER

AFPA is the peak national industry body representing the resources, processing, and pulp and paper industries covering the forest products value chain.

AFPA represents all elements of the value chain from the sustainable harvesting of plantations and multiple use natural forest resource including forest establishment and management, harvesting and haulage, processing of timber resources and manufacture of pulp and paper.