



LYONS ELECTORATE

A FOREST INDUSTRIES PROFILE



TAS
\$574 MILLION
 economic contribution

LYONS
2,297 JOBS
 across the forest
 product industries

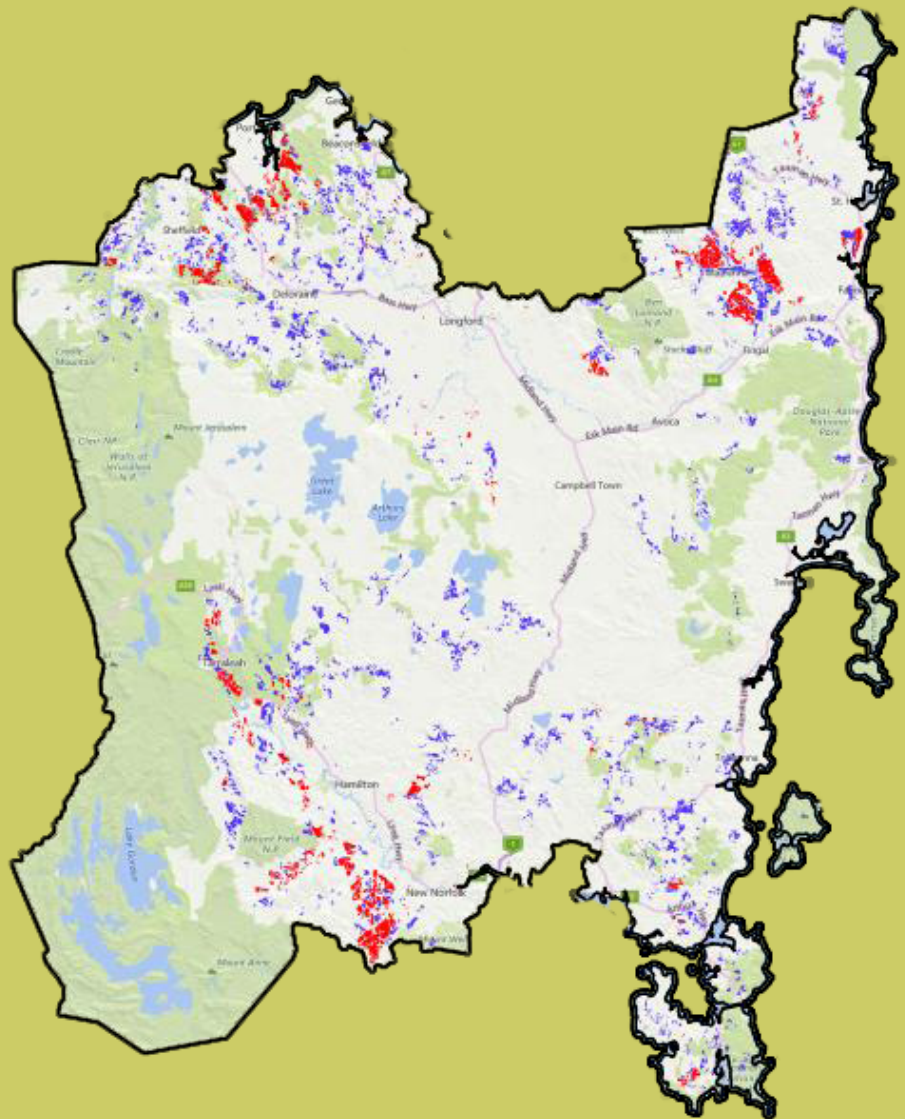
Forest Product Industries	Direct employment	Indirect employment
Lyons	 967	 1,330
Tasmania	 3,586	 4,931
Australia	 76,400	 105,050

LEGEND

Softwood Plantations



Hardwood Plantations



Products/industries in the area:

- Softwood and hardwood plantations
- Managed native forest
- Silvicultural services
- Sawmills

Big employers:

- Sustainable Timber Tasmania
- Torenus Timber
- Norske Skog
- Many more smaller operators



TREES | WOOD | PAPER

AFPA is the peak national industry body representing the resources, processing, and pulp and paper industries covering the forest products value chain.

AFPA represents all elements of the value chain from the sustainable harvesting of plantations and multiple use natural forest resource including forest establishment and management, harvesting and haulage, processing of timber resources and manufacture of pulp and paper.