



FORREST ELECTORATE

A FOREST INDUSTRIES PROFILE



WA
\$1.47 BILLION
 economic contribution

FORREST
2,685 JOBS
 across the forest
 product industries

Forest Product Industries

Direct employment Indirect employment


Forrest


 1,130
 
 1,554

Western Australia


 5,503
 
 7,566

Australia

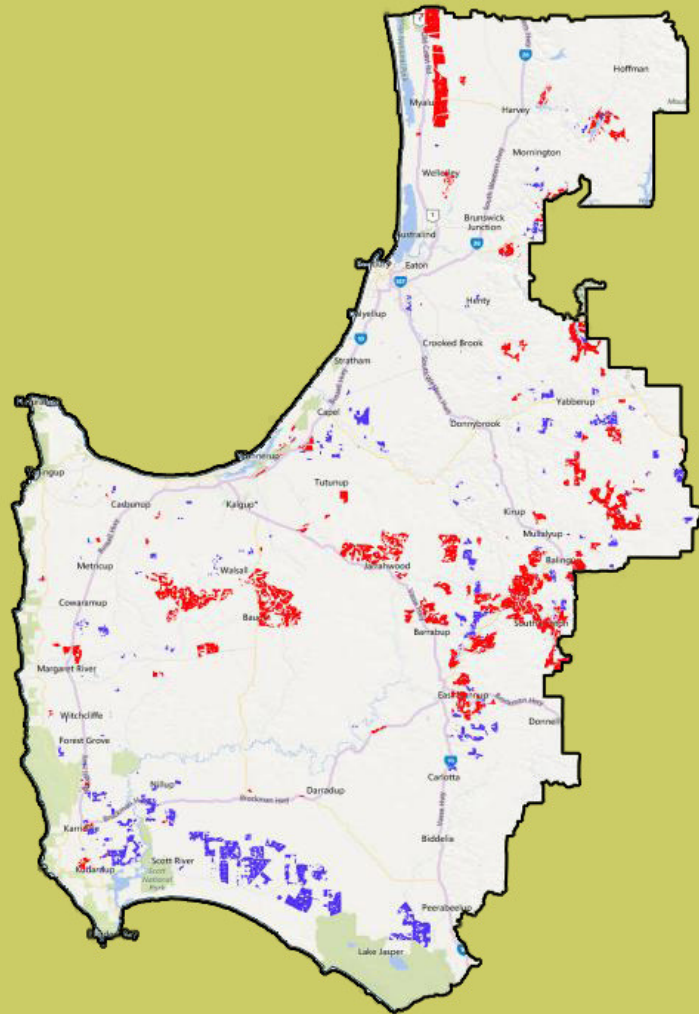

 76,400
 
 105,050

LEGEND

Softwood Plantations



Hardwood Plantations



Products/industries in the area:

- Hardwood and softwood plantations
- Export facilities
- Chipping facilities
- Sawmills
- Managed native forest
- Particleboard processing plant

Big employers:

- Bunbury Fibre Exports
 - Wespine Industries
 - Laminex Industries
 - Auswest Timbers
 - PF Olsen
 - WAPRES
 - WA Bluegum
 - Forest Products Commission of WA
- And many more smaller operators



TREES | WOOD | PAPER

AFPA is the peak national industry body representing the resources, processing, and pulp and paper industries covering the forest products value chain.

AFPA represents all elements of the value chain from the sustainable harvesting of plantations and multiple use natural forest resource including forest establishment and management, harvesting and haulage, processing of timber resources and manufacture of pulp and paper.