









FISHER ELECTORATE

A FOREST INDUSTRIES PROFILE



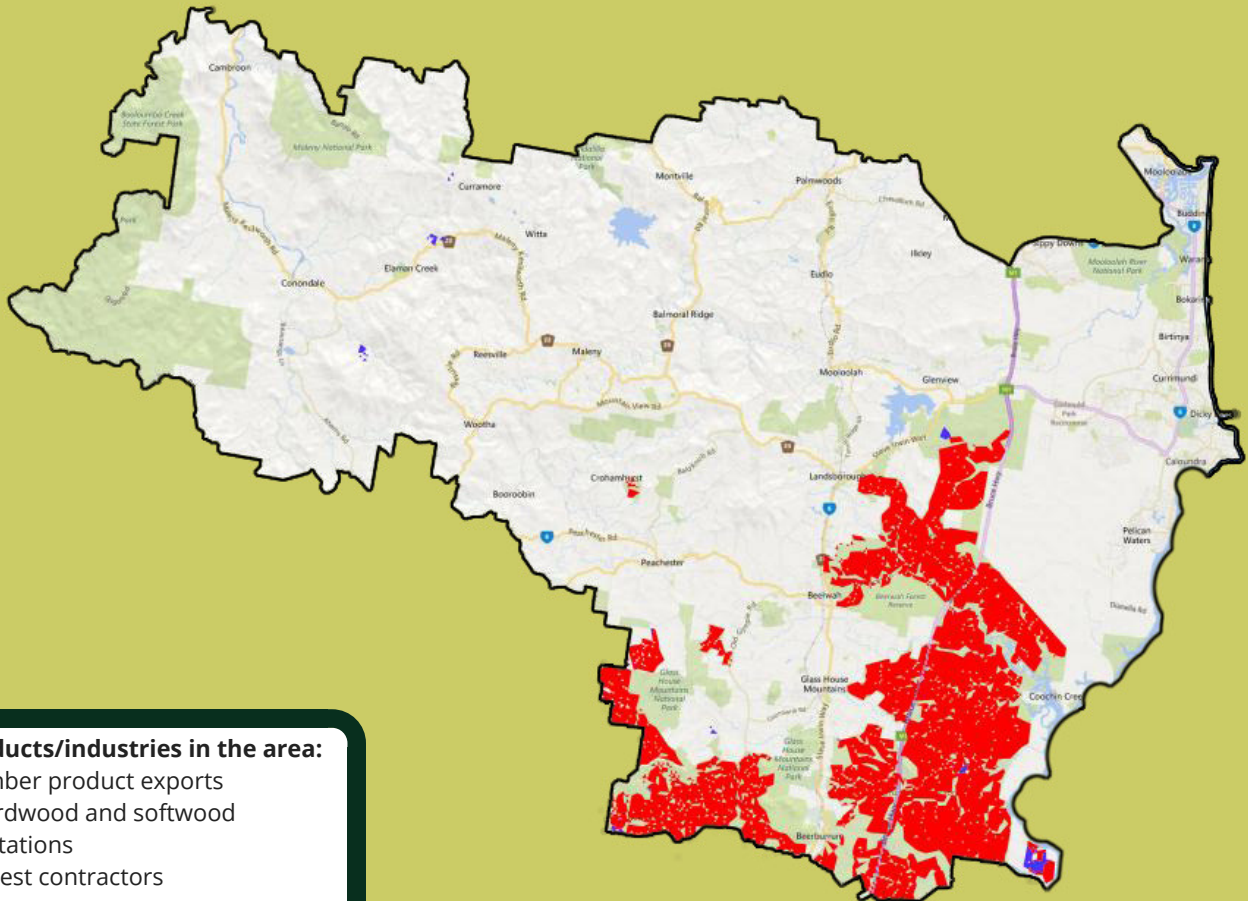
Forest Product Industries	Direct employment	Indirect employment
Fisher	 473	 651
Queensland	 12,422	 17,080
Australia	 76,400	 105,050

LEGEND

Softwood Plantations



Hardwood Plantations



Products/industries in the area:

- Timber product exports
- Hardwood and softwood plantations
- Forest contractors

Big employers:

- HQP
- Other smaller operators



TREES | WOOD | PAPER

AFPA is the peak national industry body representing the resources, processing, and pulp and paper industries covering the forest products value chain.

AFPA represents all elements of the value chain from the sustainable harvesting of plantations and multiple use natural forest resource including forest establishment and management, harvesting and haulage, processing of timber resources and manufacture of pulp and paper.