









CLARK ELECTORATE

A FOREST INDUSTRIES PROFILE



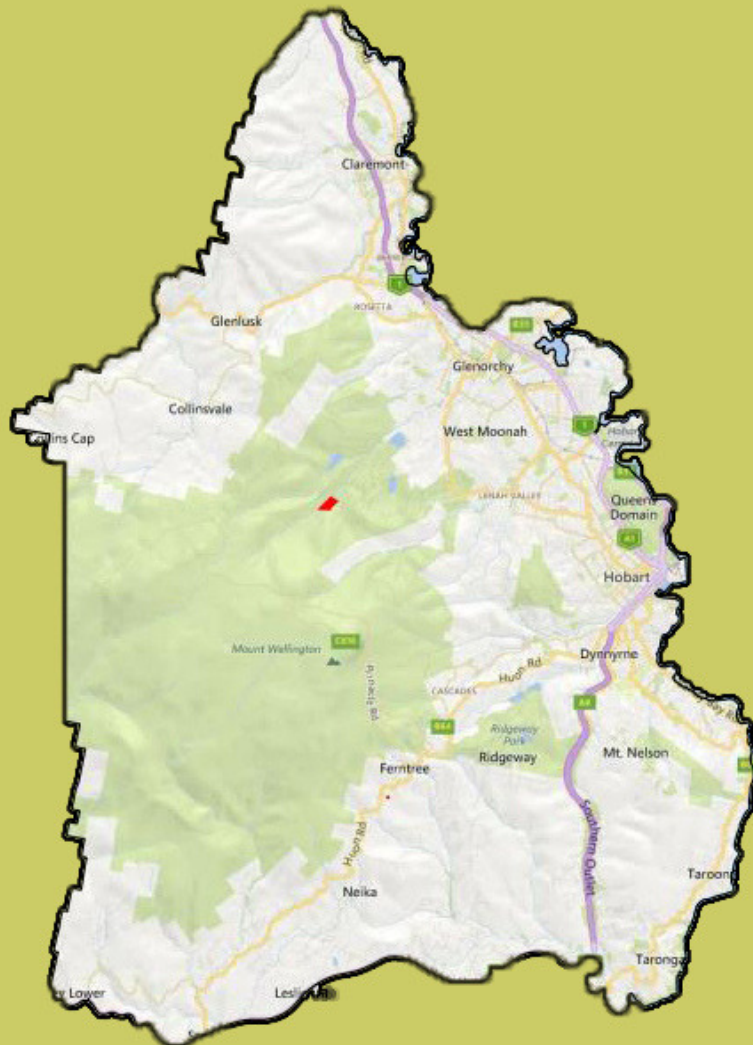
TAS
\$574 MILLION
 economic contribution

CLARK
886 JOBS
 across the forest
 product industries

Forest Product Industries	Direct employment	Indirect employment
Clark	 373	 513
Tasmania	 3,586	 4,931
Australia	 76,400	 105,050

LEGEND

Softwood Plantations



Products/industries in the area:

- Silvicultural services
- Corporate offices
- Policy
- Distribution facilities

Big employers:

- Sustainable Timber Tasmania
 - SFM Environmental Solutions
 - Forest Practices Authority
 - Private Forests Tasmania
 - McKay Timber
 - Ta Ann Tasmania
 - Hydrowood
- And many more smaller operators



TREES | WOOD | PAPER

AFPA is the peak national industry body representing the resources, processing, and pulp and paper industries covering the forest products value chain.

AFPA represents all elements of the value chain from the sustainable harvesting of plantations and multiple use natural forest resource including forest establishment and management, harvesting and haulage, processing of timber resources and manufacture of pulp and paper.