



# BASS ELECTORATE

## A FOREST INDUSTRIES PROFILE



**TAS**  
**\$574 MILLION**  
 economic contribution

**BASS**  
**2,238 JOBS**  
 across the forest product industries

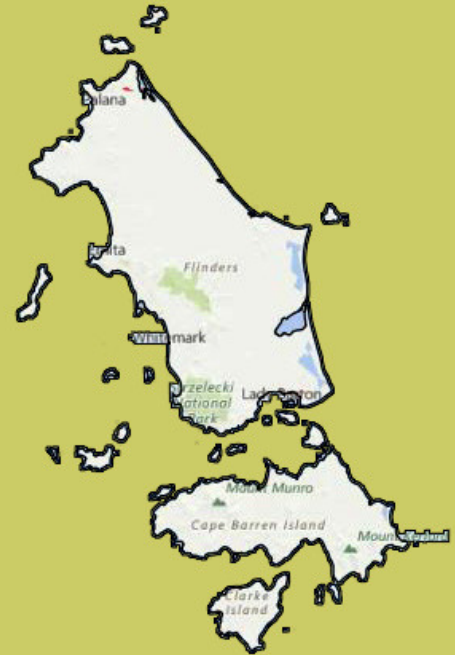
Forest Product Industries	Direct employment	Indirect employment
Bass	 942	 1,296
Tasmania	 3,586	 4,931
Australia	 76,400	 105,050

## LEGEND

Softwood Plantations



Hardwood Plantations

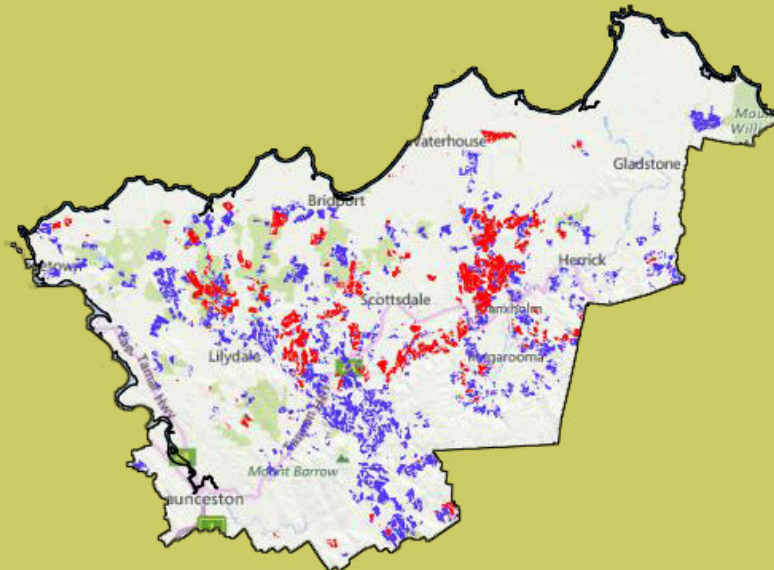


### Products/industries in the area:

- Sawmills
- Particleboard processing plant
- Softwood plantations
- Managed native forest
- Forestry related export activities

### Big employers:

- Timberlink
- Neville Smith Forest Products
- Reliance Forest Fibre
- Forico
- Artec Australia
- Sustainable Timber Tasmania
- And many more smaller operators



TREES | WOOD | PAPER

AFPA is the peak national industry body representing the resources, processing, and pulp and paper industries covering the forest products value chain.

AFPA represents all elements of the value chain from the sustainable harvesting of plantations and multiple use natural forest resource including forest establishment and management, harvesting and haulage, processing of timber resources and manufacture of pulp and paper.